

Slide Show Online Help Contents

To choose a topic using the mouse, point to an underlined topic and click the mouse button. To use the keyboard, press Tab to select an underlined topic and press Enter. For general information on Help, choose "How to use Help" from the Help menu.

For more information, click one of the following category names:

[How Slide Show works](#)

[Using the Tool Bar](#)

[How to display a different collection of images](#)

[Changing the settings in the Configuration screen](#)

[How to change the delay between images](#)

[How to use Slide Show as a screen saver](#)

[Advanced Configuration Options](#)

[Answers to common questions](#)

[To learn more about the artists and photographers and their work...](#)

[How to reach Second Nature](#)

How Slide Show works

When you installed the Second Nature software, the INSTALL program placed Slide Show in a new directory called SLIDESHW (or whichever directory you typed in its place). INSTALL then created subdirectories to hold all of its accompanying images.

If you kept all the default settings, here's what happens:


- Slide Show will run automatically each time you start Windows. (It's installed in your Windows Startup group.)
- Slide Show shows a new image once each day.
- Slide Show selects images from the files in the "SLIDESHW\IMAGES\new collection" directory.

To begin using Slide Show

You control Slide Show using the Toolbar. If you've installed the program with all the defaults, the Toolbar should be showing on your screen automatically.



If you don't see the Toolbar, you must start Slide Show manually. Follow these steps:

1. In the Program Manager window, open the Startup group or Second Nature group.
2. Double-click on the Slide Show icon. 

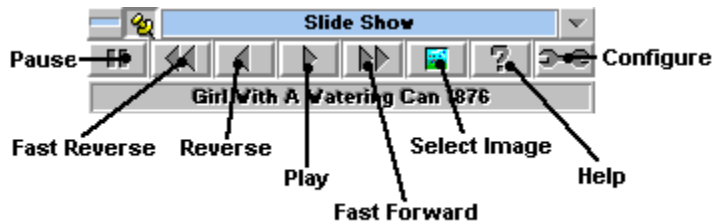
See also:

[Using the Toolbar](#)

[Changing the settings in the Configuration screen](#)

[How to use Slide Show as a screen saver](#)

Using the Tool Bar



Press this button... ...to do this:

Tack When the tack is selected (down), the toolbar remains in the background. When the tack is deselected (up), the toolbar "floats" to the top of the screen no matter which other applications you open or close.

Pause Regardless of the delay setting, the current image remains displayed until you release this button, or until you press "fast-reverse," "reverse," "play" or "fast-forward".

Fast Reverse Press this button until the title or filename of the image you want to display appears in the Description line. Slide Show reverts to that image.

Reverse Revert to the previous wallpaper image.

Play Advance to the next wallpaper image available in the current directory.

Fast Forward Press this button until the title or filename of the image you want to display appears in the Description line, then release the button. Slide Show advances to that image.

Select Image See other image collections available from Second Nature. (Includes phone numbers and ordering information.)

Help Read this help file.

Configure Displays the configuration screen. In that screen, you can change any of these Slide Show settings:

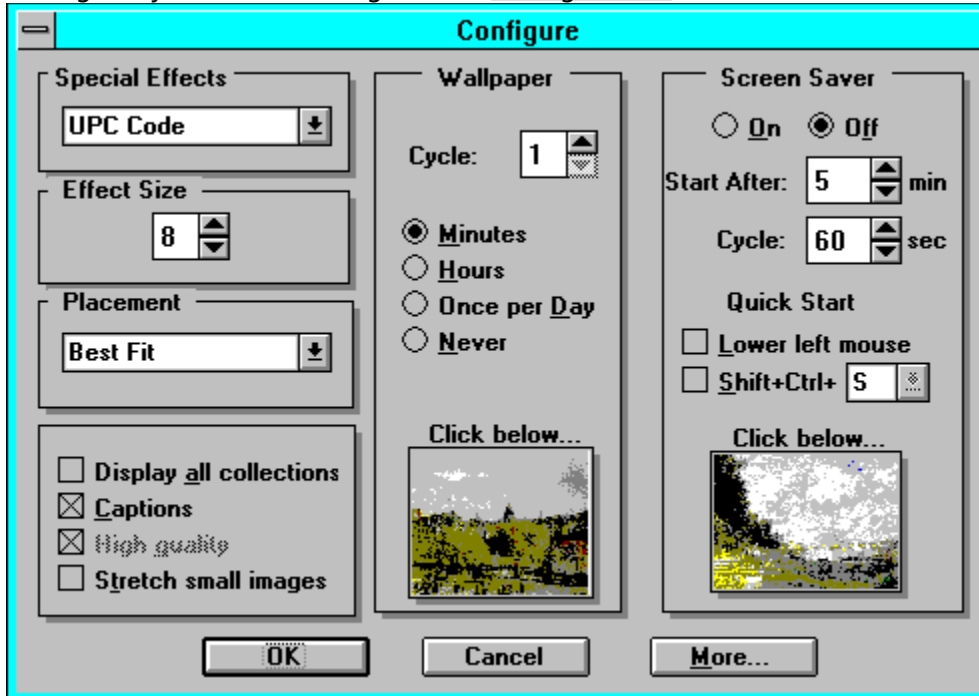
- Placement and special effects of wallpaper and screen saver images
- Effect size
- Delay before changing images
- Image collection
- Pointer and outline styles within Slide Show

See also:

[Changing the settings in the Configuration screen](#)

Changing the settings in the Configuration screen

Change any of these settings in the Configuration screen:

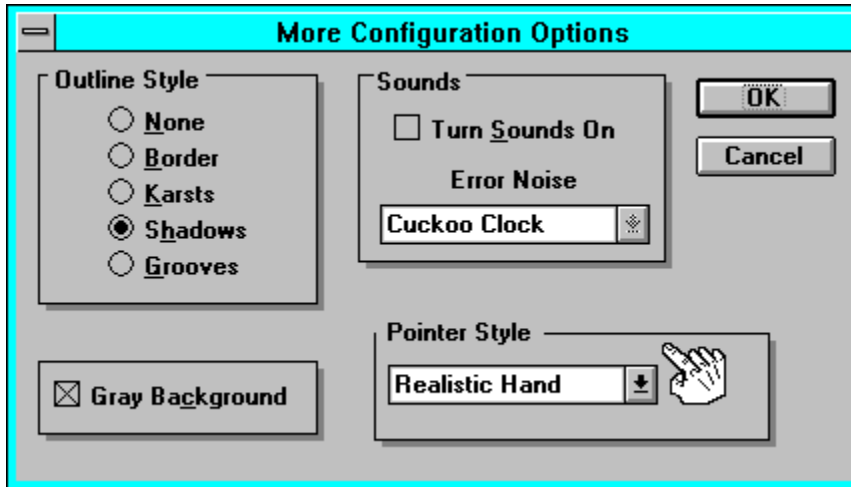


- "Placement" Controls the position of the wallpaper image on the screen.
[Click here for a description of the options](#)
- "Special Effects" Controls the way wallpaper images are painted on the screen.
[Click here for a description of the options](#)
- "Effect size" Modifies the special effects described above. A large effect size displays the image faster. A small effect size displays the images more slowly.
- "Display All Collections" Causes Slide Show to display all the images from every installed collection, instead of displaying only the images found in the currently selected collection.
- "Captions" Displays the image title/caption at the top center of the screen.
- "High Quality" Displays the images using the most appealing dithering algorithm. If this option is turned off, the images don't display quite as well, but, the special effects will cause a new image to blend into the old image nicely.
- "Stretch Small Images" If checked, Slide Show's "Best Fit" mode stretches very small images to fit the screen. If unchecked, "Best Fit" preserves the original size and shape of small images. *We recommend you keep this default setting.*
- "Cycle" Controls the length of time between changes in the wallpaper or

screen saver display. By default, Slide Show displays one new wallpaper image each day.

"Quick Start"

Allows you to quickly activate the screen saver by clicking the mouse in the lower left corner or by pressing the specified hot-key combination.



Offers a few more configuration options, including the look of the Slide Show control screens.

See also:

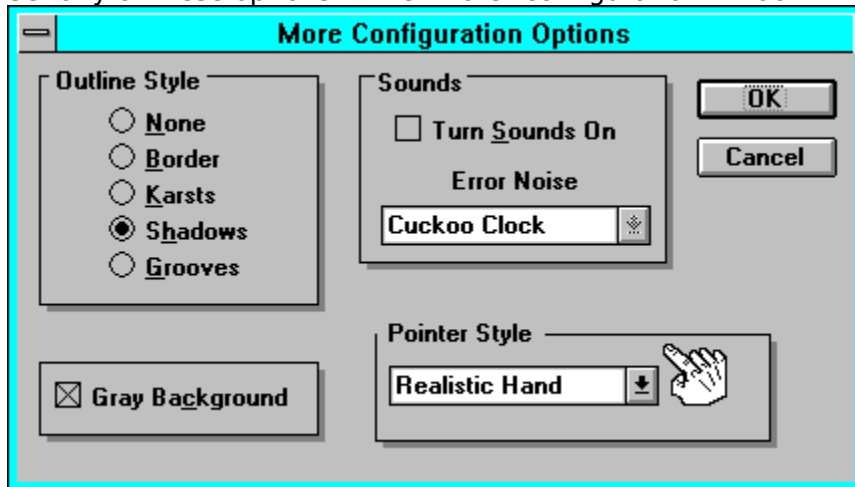
[How Slide Show works](#)

[How to change the delay between images](#)

[How to display a new collection of images](#)

Advanced Configuration Options

Set any of these options in the "More" configuration window.



- "Outline Style" Sets the style of the borders in this window and the configuration window.
- "Background" Sets the background color of this window and the configuration window.
checked = gray
unchecked = white
- "Pointer Style" Changes the appearance of the mouse cursor. The default is a realistic hand, but you can choose from two other styles.
- "Sounds" Lets you customize the sound you want Slide Show to use to alert you to something (such as an error). The sound you choose replaces the standard Windows "beep." To use this option, your computer must have a sound board installed.

How to use Slide Show as a screen saver

A screen saver prevents your computer screen from "burning in" when you leave it unattended. Windows comes with a default screen saver, but you can substitute Slide Show for the Windows screen saver.

To use Slide Show as a screen saver:

1. In the Program Manager window, choose *Control Panel*.
(Control Panel is usually in the Main program group.)
2. Choose *Desktop*.
3. Find the *Name* option in the Screen Saver field. In the Name option box, choose **Slide Show**.
4. Choose *OK*, then close the Desktop and the Control Panel.

Placement Options

- | | |
|-----------------|---|
| "Tiled" | Fills the screen with multiple copies of the image. Use this option with small images (for example, the .BMP files that come with Windows and reside in your \WINDOWS directory). |
| "Best fit" | Attempts to fill as much of the screen as possible with one image (without distorting the image). |
| "No stretching" | Places one image (actual size) in the center of the screen. |

Special Effects Options

"Standard"	Displays the image with one "paint" stroke.
"Mosaic"	Paints the image in a series of randomly placed tiles.
"Vertical curtain"	Begins the image at the sides of the screen and fills in toward the center.
"Horizontal curtain"	Begins the image at the top and bottom of the screen and fills in toward the center.
"Converge"	Begins the image at the edges of the screen and fills in toward the center.
"Reverge"	The opposite of 'Converge'.
"UPC code"	Paints the image in a series of vertical lines filled in at random.
"Puzzle"	Builds the image from randomly placed puzzle pieces.
"Jumble"	Jumbles the image, then reassembles it.
"Paint Can"	"Paints" the image with dripping paint.
"Chips"	Builds the image from triangular chips.
"Portals"	Paints the image using concentrically growing circles.
"Drop Box"	Builds the image from "dropped" boxes.
"Random"	Chooses any of the methods described above.

How to change the delay between images

To change the delay time between images:

1. From the Toolbar, press the "Configure" button.
2. Find the *Cycle* option (for Wallpaper or Screen Saver).
3. Change the number and unit to a new setting (5 minutes, 2 days, etc.)
4. Choose *OK* to exit the Configuration screen.

See also:

[How Slide Show works](#)

[Changing the settings in the Configuration screen](#)

How to display a new collection of images

1. From the Toolbar, press the "Select Image" button.
2. You'll see the following:



3. Using the combo-box, select the image collection you want to display. Slide Show will display Second Nature image files (.SNX), Windows bitmap (.BMP) files, and .JPG files. Then double-click the image you want to appear first.

See also:

[How Slide Show works](#)

[Changing the settings in the Configuration screen](#)

To learn more about the artists and photographers and their work...

To learn about the artist or photographer who created one of your collections, position the cursor anywhere on one of the images and **click the right mouse button**.

If you have ideas for other collections or you know of an artist or photographer you'd like to promote, let us know! Send a few nonreturnable pictures, cards, or other examples of the art. Include an explanation of why you enjoy the artist or photographer and any information you have about how we could contact them.

Send it all to:

**Second Nature Software
Attn: Product Manager
812 SW Washington
Suite 1050
Portland, OR 97205**

How to reach Second Nature

To **order other collections**, call:

1-800-782-7000 or **1-503-291-9500**.

Have your Visa or MasterCard information ready.

Note: This number is for placing orders only. Please see the BBS for technical support.

Get news, collections, and technical support from our electronic **Bulletin Board System**. Use your modem to call:

1-503-221-8744

Note: Set your modem to 8 data bits, 1 stop bit, no parity.

To learn more about Second Nature, choose the "About" option in the Toolbar's system menu.

Answers to common questions

Q. How do I make the images look better on the screen?

A. Make sure you're running Windows in 256-color mode. To do this, your video display driver must support 256 colors, not just 16.

Q. How do I find out which video driver I'm using? And if it doesn't support 256 colors, how can I use one that does?

A. To find out which video driver you're using, check your computer's Windows Setup. (You can usually find the "Win Setup" icon in the Program Manager's Main group.) Look at the "Display" field. If the driver name contains the number 256, it probably supports 256 colors.

If the name of the driver contains the number 16 (not 256), you should probably install a new display driver. Follow these steps:

1. Find the diskette that came with your video card or computer.
2. Look through the provided display drivers for a driver file that supports 256 colors. (For example, look for the number "256" or the words "hi res.")
3. If you find an appropriate driver, rerun the Windows Setup program (located in the Windows directory). Follow the Setup program's instructions to install the new video driver.

Q. I keep getting an "General Protection Fault Error" when Slide Show tries to display certain images. What's wrong?

A. Some video drivers can't display small bitmap images when Slide Show tries to *stretch* those images.

To fix the problem, run Slide Show. Press the "Configure" button. In the Configuration screen, uncheck the box labeled "Stretch small images."

If you continue to have problems with your video driver, select the "No stretching" option in the *Placement* field.

Images

The graphics files that Slide Show displays on your screen. The images that come with Slide Show are special compressed files (.SNX) that take up very little disk space (usually around 40 Kbytes each). In addition to the images that came with the program, Slide Show can display bitmap files (*.BMP format) and .JPG files.

Startup Group

A special Windows group in the Program Manager. Any application in the Startup Group runs automatically whenever you start Windows.

Description line

A line that shows the title or filename of the image Slide Show is currently displaying.

Wallpaper Image

Another name for the graphic images displayed by Slide Show.

Configuration

Just a high-tech word for the program's setup information.

Delay

The time that will elapse before the Slide Show displays a new image.

